



Medicated Cow Ghee Formulation

IMMUNITY SUPPORT

IMMUNITY SUPPORT



Frequent infections



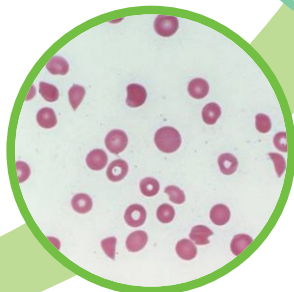
Delayed growth and development



Loss of appetite



Anemia



Low Platelet count

Immunoplus Soft Gelatin Capsule

30 Capsule



Immuno FP Capsule

60 Capsule



Immunoplus Soft Gelatin Capsule

30 Capsule



Composition :

Each Soft Gelatin Capsule contains Ghruta 500 mg which consists of :

<u>Quath Dravya of</u>		
Haridra	(<i>Curcuma longa</i>)	44.45 mg
Amalaki	(<i>Emblica officinalis</i>)	88.90 mg
Guduchi	(<i>Tinospora cordifolia</i>)	133.35 mg
Triphala	(<i>Generic preparation</i>)	44.45 mg
Neempatra	(<i>Azadirachta indica</i>)	44.45 mg
Pippali	(<i>Piper longum</i>)	11.10 mg
Bhumiamalaki	(<i>Phyllanthus amarus</i>)	44.45 mg
Gokshura	(<i>Tribulus terrestris</i>)	88.90 mg
Processed by the method of SIDDHA GHRUTA in		
Cow Milk		500 mg
Go-ghruta		500 mg
Permitted colours used in capsule shell		

Dosage: Take 2 soft gel capsules daily in the morning or as recommended by the physician. It should ideally be taken on empty stomach before meals. For better results it should be taken with warm water.

Benefits:

- Supports Immune Health
- May help to empower Immune Cells For Optimal Performance
- Helps to Improve Body's Natural Ability To Fight Off Infection
- Formulated with Ayurvedic herbs for enhancing Immunity Naturally

Immuno FP Capsule

60 Capsule



Composition :

Each 450mg Capsule contains		
Ashwagandha root powder	(Withania somnifera)	102mg
Yashtimadhu stem & root powder	(Glycyrrhi zaglabra)	102mg
Amla pericarp of fruit powder	(Emblca officinalis)	52mg
Sunthi rhizome powder	(Zingiber officinale)	51.20mg
Tulsi leaves powder	(Ocimum sanctum)	34mg
Giloy stem powde	(Tinospora cordifolia)	41.40mg
Turmeric rhizome powder	(Curcuma longa)	13.70mg
Triphala powder (pericarp of amla, harde, baheda)	(Mix of emblica officinalis, Terminalia chebula, Termianalia bellerica)	13.70mg
Neem leaves powder	(Azadirachta indica)	8.10mg
Pippali fruit powder	(Piper longum)	2mg
Bhuiamla root, stem, leaf powder	(Phyllanthusindicus)	8.10mg
Gokshur fruit powder	(Tribulus terrestris)	16.30mg
Nagarmotha rhizome powder	(Cyperus scariosus)	5.50mg
Bhavna dravya		
Cow ghee		qs
Cow milk		qs
Excipient		qs

Benefits

- Supports balanced immune function.
- Supports healthy digestion.
- Acts as an antioxidant.
- Helps to relieve fatigue

Dosage: Take 1 capsule twice daily, preferably after meals or as directed by physician.